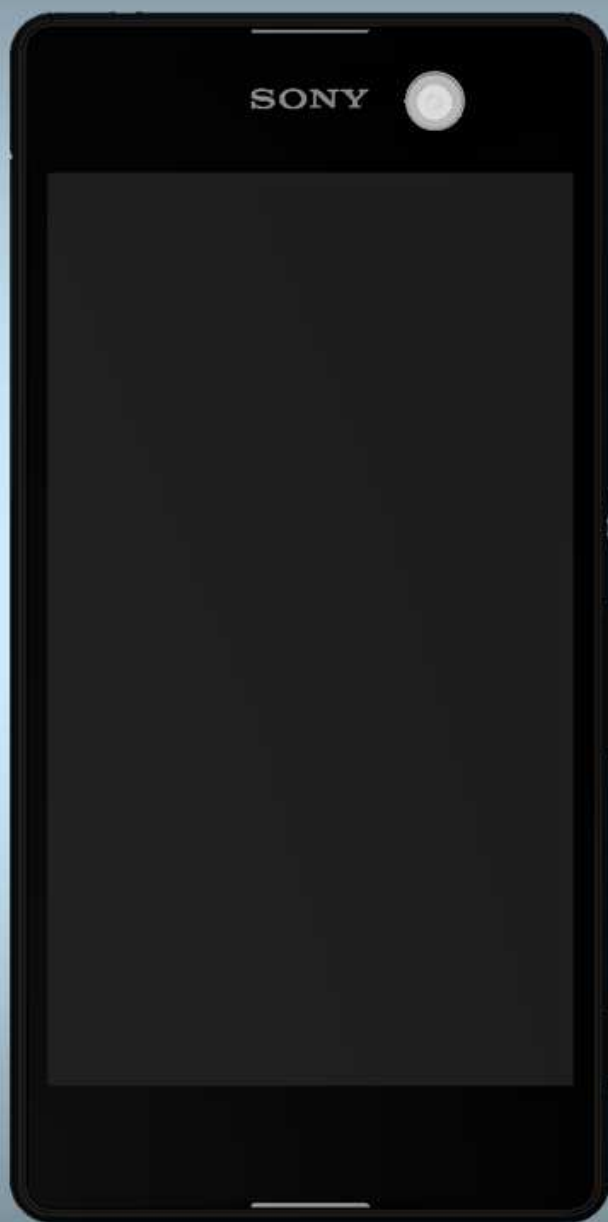


Repair Movies

- mechanical -



Xperia™ M5

E5603, E5606, E5633, E5643, E5653, E5663

CONTENTS

1	Movies	3
1.1	Disassembly	3
1.2	Reassembly	4
2	Revision History	5

To view the embedded repair movies in this document, Acrobat Reader version 8 (or later) and Flash Player version 8 (or later) must be installed on your computer.

For best picture quality, select “Actual size” or “100%” as zoom level in Acrobat Reader. To magnify while keeping an acceptable picture quality, increase the zoom level to 200%.

**If the movies appear to be jerky or blurred when viewing on-line, this is probably caused by the connection speed being too slow.
In that case, right-click with the mouse on the document name and select Save Target As to download the repair movie document for off-line viewing.**

**For general information about repair movies, refer to
1220-1333: Generic Repair Manual - mechanical**

The movie is based on using E5633 model, the design differences between E5603, E5606, E5633, E5643, E5653 and E5663 are minor, therefore please refer to the Working Instruction for detailed instruction.

1 Movies

1.1 Disassembly

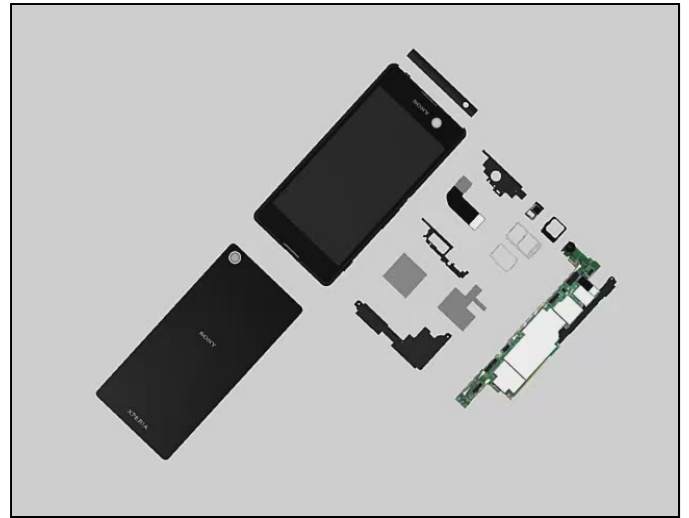
- Tray Single SIM (E5603/E5606/E5653)/Tray Dual SIM (E5633/E5643/E5663) (a) and Tray SD (b)
- Panel Deco Top
- Back Panel
- Conductive Tape Battery Connector
- Main Camera Rubber
- Holder Diversity Ant Assy
- Chat Camera
- Holder Speaker Main Ant Assy
- Kapton Film LCM Connector
- Main PBA and Holder GPS/WiFi Ant Assy
- Second Mic Rubber
- Holder Earspeaker (a) and Display Cover Assy (b)



Movies

1.2 Reassembly

- Display Cover Assy (a) and Holder Earspeaker (b)
- Second Mic Rubber
- Main PBA and Holder GPS/WiFi Ant Assy
- Kapton Film LCM Connector
- Holder Speaker Main Ant Assy
- Chat Camera
- Holder Diversity Ant Assy
- Main Camera Rubber
- Conductive Tape Battery Connector
- Back Panel
- Panel Deco Top
- Tray SD (a) and Tray Single SIM (E5603/E5606/E5653)/ Tray Dual SIM (E5633/E5643/E5663) (b)



2 Revision History

Rev.	Date	Changes / Comments
1	2015-Aug-16	Initial release
2	2015-Sept-16	Changed screw torque from 4Ncm to 3Ncm for the screw that fix Holder Diversity Ant Assy